



# Narooma Community Men's Shed

## Newsletter

September 2023 Issue 67

### Jewellery Experience

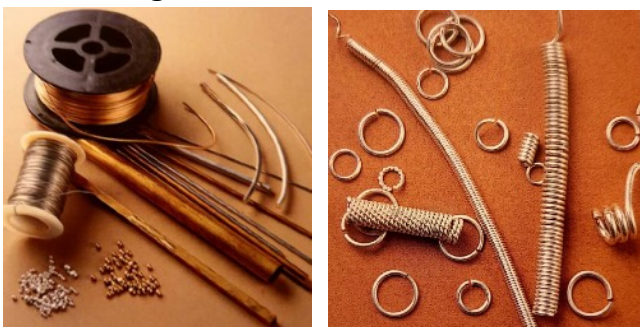
On Friday 8 September at 9.30am Donna will lead an introduction to making jewellery using metal. All members are welcome.

Metal is a wonderful material with copper, brass, and silver as the most popular and not too costly.

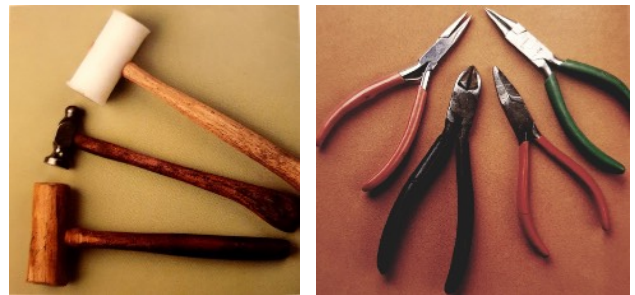


There are two main types of metalwork and we will approach both - cold metal and hot metal work. Cold metal uses physical force, resistance and pressure while hot metal uses heat with a torch and solder.

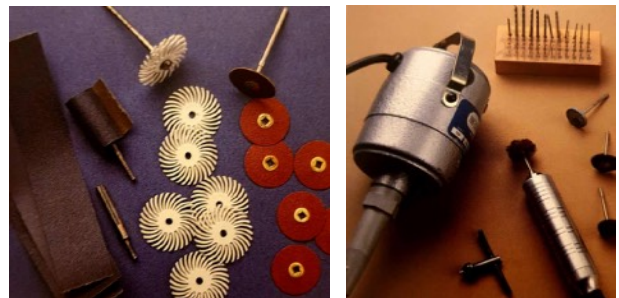
Materials are sheet metal, various wires and tubing.



Tools may include bench pin, steel block, dipping box, calipers, rulers, templates, center punch, chasing hammer, various mallets, flexible shift machine, drill bits,



saw frame and blades, needle files, bastard file, multiple pliers (flat nose, chain nose, round nose), mandrels, chasing tools, sandpaper, various metals etc.



Techniques we will use are piercing and sawing, riveting, stamping and finishing.



Safety comes with knowledge and patience - and the finished products are a joy.

## In this Issue

	Page
Jewellery Experience	1
In this Issue	2
What's On	2
President's Report	3
Member Creations - wood	4
Member Creations - metal	5
At the Shed	6
Olden days sums	7
Crossword	8
Humour	9
Contact us	10

## What's On

8 September	Friday	9.30am	Jewellery Experience
10 September	Sunday	9am	Dalmeny Market
12 September	Tuesday	12.30pm	Men's Lunch at the Shed Speaker John Landy
16 September	Monday	12noon	Lunch at Tilba Winery
19 September	Tuesday	10am	Annual General Meeting and Lunch
22 September	Friday	12.30pm	Community Lunch at the Shed
24 September	Sunday	9.30am	Rotary Market
26 September	Tuesday	1.30pm	Committee Meeting

## President's Report



August is always a fairly quiet time of year but, nevertheless, there was a good crowd at Dalmeny Market.

David Whitfield and Steve Paynes held a Voice Referendum meeting with a film, which was well attended and provided a lot of information.

Wood, Metal, and Paint Sheds have been beavering away - as usual. Thanks go to Pete L and Smiley for their work at decreasing the pile of wood chip.

Social Lunches for August were Monday at Tuross - thanks Steve - and two Shed lunches - thanks Bernie and Geoff. Good food, good company...

Fourteen Shed Members attended the Quota Trivia night in August and helped to break the record for biggest crowd ever. Quota were delighted.

AGM Nomination Forms are available at the Office.

**Remember**  
**AGM - 19 Tuesday September - 10am**  
**come and vote**  
**(switch off phones)**

David Trickett



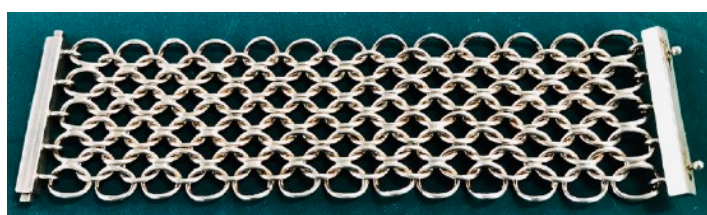
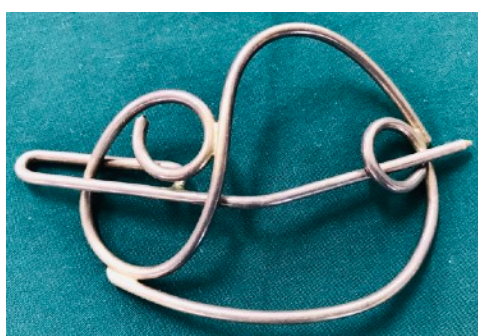
*Much of mechanical engineering is based on the six simple machines: the lever, the inclined plane, the pulley, the wedge, the wheel and axle, and the screw. This one doesn't seem to have wheels. Are there any specialists out there who can name it and/or describe its purpose.*

# Member Creations - wood



Thread-holder that folds flat when not in use

## Member Creations - metal



# At the Shed



First Aid box is on the wall to the left of the entry doors to the Assembly Room from the Wood Working Room



First Aid box is on the wall to the right at the entry to the Metal Shed



Projects flow: ...from table saw



..to CNC router



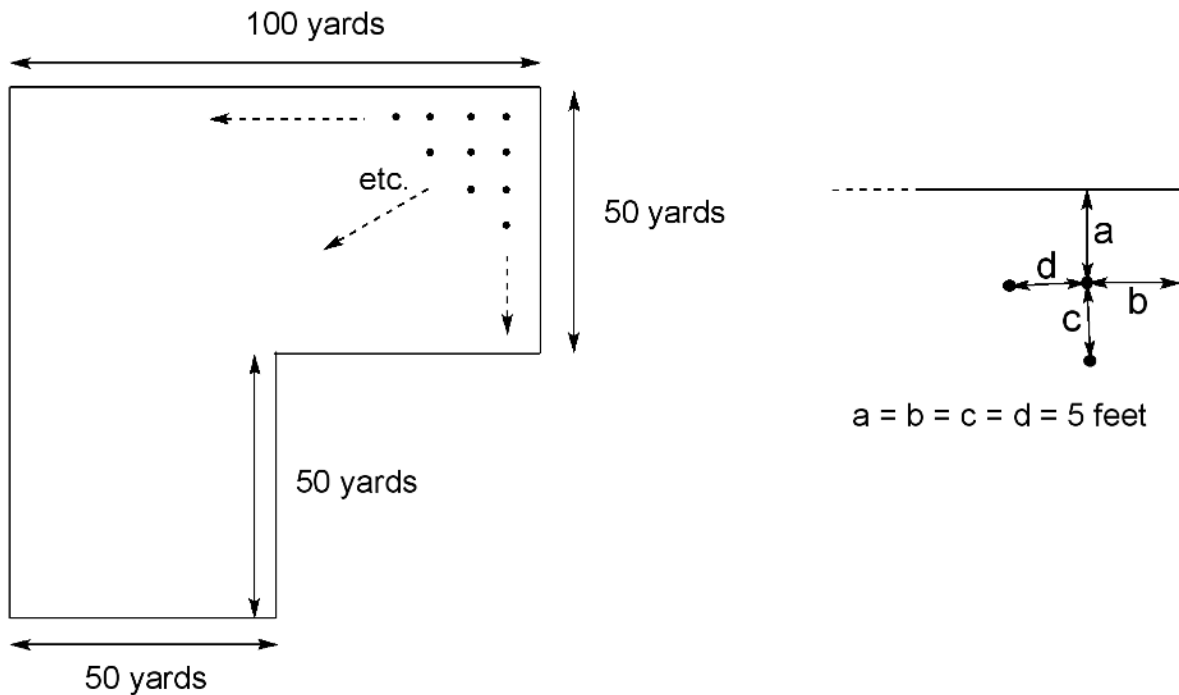
Mystery Member: clue - often seen with paint brush or sandpaper in hand

## SHED Cleaning Roster - September to December 2023

date	day	team	member	member
1 September	Friday	F	Donna Baker	Helen Azar
7 September	Thursday	G	Martin Cooper	Geoff Broadfoot
15 September	Friday	H	Cathy Amos	Sally Davey
21 September	Thursday	I	Peter Lonergan	Wayne Dineen
29 September	Friday	J	Robyn Scott-Charlton	Lyn Hastings
6 October	Friday	K	Alison Philip	Liz Clydsdale
12 October	Thursday	A	Dick Nagle	Eric Teague
20 October	Friday	B	Angie Ulrichsen	Margaret Watkins
26 October	Thursday	C	John Voytas	Curly Carles
3 November	Friday	D	Robyn Burrett	Jen Hawkins
9 November	Thursday	E	Dennis Arnold	Charles Demajo
17 November	Friday	F	Donna Baker	Helen Azar
23 November	Thursday	G	Martin Cooper	Geoff Broadfoot
1 December	Friday	H	Cathy Amos	Sally Davey
7 December	Thursday	I	Peter Lonergan	Wayne Dineen
15 December	Friday	J	Robyn Scott-Charlton	Lyn Hastings
22 December	Friday	K	Alison Philip	Liz Clydsdale

## Olden days sums

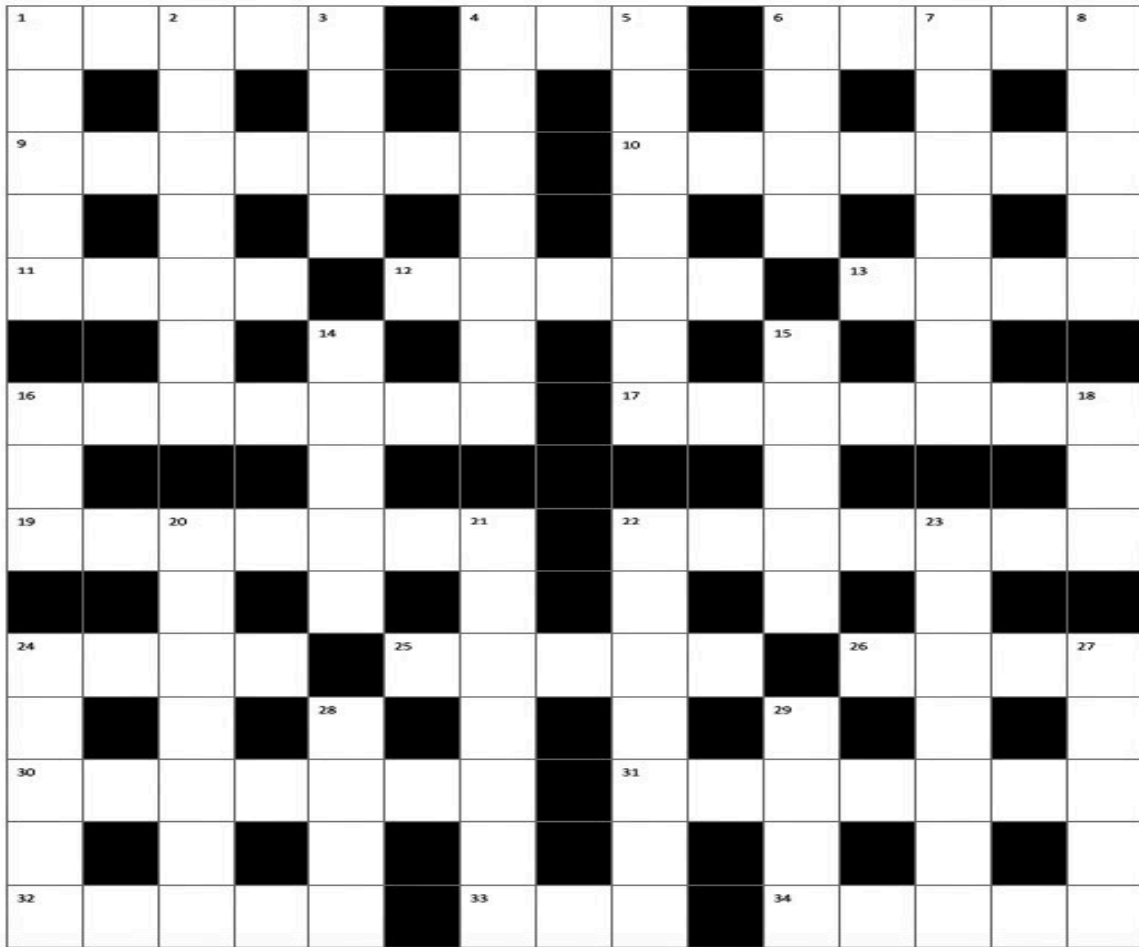
You are setting up your new choko paddock with posts to hold the trellises. The post holes must be 5 feet apart in both directions, as shown, and 5 feet from the fence lines.



A well known member of the Narooma Men's Shed reckons he can dig 10 holes in an hour if you pay him £ 1.10.0 per hour. You have budgeted £400 for the job. How many holes are required, and can he do it under budget?

**Solution:**  
 In the big rectangle, which is 300 ft long, there are 60 intervals of 5 ft, which means 58 holes in that direction. On the side, which is 150 ft, there are 30 intervals of 5 ft, which means 28 holes. So in that rectangle, there are 58 x 28 holes, i.e. 1624 holes. In the remaining square, there are 28 x 28, PLUS a row of 28 that line up with the internal corner. Total holes = 1624 + 784 + 28 = **2436**.  
 At 10 holes per hour, that is 243.6 hours, say 244, cost = 244 x £ 1.10.0 = £ 366.0.0, so you are **under budget**.

# Crossword and Clues



## ACROSS

- 1 More un-even?  
 4 Part of a Kung Fu night could be amusing  
 6 That mixed-up ant is leaving a discolouration  
 9 Of the Pope who ruled 1471-1484  
 10 That aristo lost so much blood that the horse didn't win  
 11 If it's a bony one, it might cause you pain  
 12 If you did this, you should be out  
 13 Could a Hindu melody be confused with a growth medium?  
 16 As an acronym, an extension of management  
 PEST  
 17 Sodium light and arsenic sulfide  
 19 Attacked by 30 ac.  
 22 If a hundred Romans could raise a Shakespearean king, it would make things more obvious (5,2)  
 24 Its plural is sometimes brassy  
 25 Oscillates, esp. vertically (2-3)  
 26 Did a bingle happen on Hovells Creek?  
 30 African weapon traditionally made from *Curtisia* wood  
 31 Once a nitrogen compound, now used to assess  
 32 Poisoned while sitting, but only partially  
 33 Sounds like M & Ms had to dash  
 34 Peter, a Huguenot lieutenant to George Vancouver, a sound fellow

## DOWN

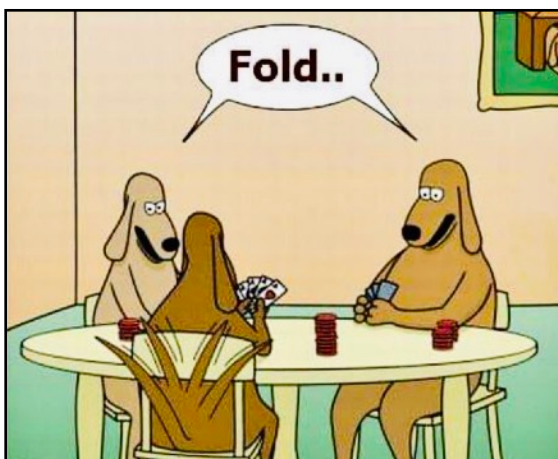
- 1 Oasthouses include safe places  
 2 Heap studied the argument, but became confused and lost his head  
 3 Homophones involve a ruler and a horse  
 4 Freeman tackled the skin problem, but incompletely  
 5 Whereto Hamlet banished Ophelia  
 6 17°37'57"N, 63°14'15"W  
 7 Polish e-commerce site known for its rapid tempo  
 8 Pseudonym of the first aerial photographer  
 14 Piers was upset about the top of the church  
 15 First, Brian looked under every rock, but he still felt worse  
 16 ...---...  
 18 Despite whirling in a spa, he's still a loser  
 20 Exercises without the Queen are taxing  
 21 Pyrolusite or ilmenite  
 22 Happily, exiting these is now encouraged  
 23 My groin, Ma, it's damaged by all this wandering  
 24 She's in a Bennett/Gaga duet, and he's in a 1955 Disney animated film  
 27 He might be a gent, but he could still be a spy  
 28 Sometimes euphemised as "experienced"  
 29 Term for flammable gases in mines



# Humour



Old people don't get grumpy - they just stop being polite and start being honest.



E	T	P	S	M	E	D	S	O	P
N	N	M	T	D	E	E	M	M	
E	N	A	X	E	A	I	S	E	A
G	M	D	S	X	A	I	R		
A	R	L	S	O	Y	O	K	A	C
O	R	L	I	E	X				
P	U	R	A	R	E	C	L	E	A
A		U	I						O
S	W	L	L	E	Y	L	E	P	E
R		R	B	R	L	S	T		
A	R	A	G	A	D	E	K	I	S
A		E	A	N	C	N	P	E	
D		E	D	B	O	N	E	S	I
A		L	A	U	R	A	I		
N		A	I	N	F	U	N	F	E

## Contact us

### Contact

Website: [www.naroomamensshed.com.au](http://www.naroomamensshed.com.au)

Email: [naroomamensshed@gmail.com](mailto:naroomamensshed@gmail.com)

Facebook: Narooma Men's Shed

AMSA Online: <http://mensshed.org/theshedonline/>

### Committee

#### Executive Committee Members

President	David Trickett
Vice-President	Wal Sheehan
Treasurer	Martin Cooper
Secretary	Tim Horstead

#### Ordinary Committee Members

Wood Shed Manager	Dick Nagle
Metal Shed Manager	Peter Lonergan
Meeting Room Manager	Geoff Broadfoot
Public Officer	Rody Byrne

### Membership

Membership of Narooma Men's Shed is open to male and female community members over age 18. A membership form can be downloaded from the website.

Annual membership fee is \$60 and members who attend the Shed contribute maximum \$5 a week to cover tea/coffee and workshop consumables such as sandpaper, drill bits, etc.)