

## Welcome to the Narooma Community Men's Shed

The Shed is located at 8 Taylor Lane (off Taylor Street) in Narooma.

It is open four days a week from 8:30 am:

Tuesday – Men's Shed (men only)

Wednesday to Friday – Community Shed (men and women welcome)

Our Mission is to promote health and well-being through our vision of providing a relaxed social place for members to try a range of activities.

Our Code of Conduct is the main statement about our values and beliefs in achieving and maintaining good personal relationships.

Our Code of Practice gives a lot of information on how the Shed is managed.

The Duty of Care includes Workplace Health and Safety Rules where each person has to look out for themselves and their mates.


Medical Care not only involves First Aid kits and a defibrillator, but also having a confidential record of any medical condition of each member and their next-of-kin contact.

Communication to members is through our monthly newsletter which allows for sharing of ideas, events, review, etc. You can also contact us on:

- Email: [naroomamensshed@gmail.com](mailto:naroomamensshed@gmail.com)
- Website: [www.naroomamensshed.com.au](http://www.naroomamensshed.com.au)
- Facebook: narooma mens shed



## What do we produce?

Area	Some Skills	Examples of Products
Woodwork	cutting sanding drilling turning on lathe laser etching fabrication	
Metal	cutting folding welding milling turning sand blasting	
Jewellery/Lapidary	cutting tumbling polishing silver smithing	
Paint Studio	painting varnishing restoring	
Greenhouse	propagation transplanting gardening	
Markets	teamwork sales publicity	



Kitchen



Woodwork Shed

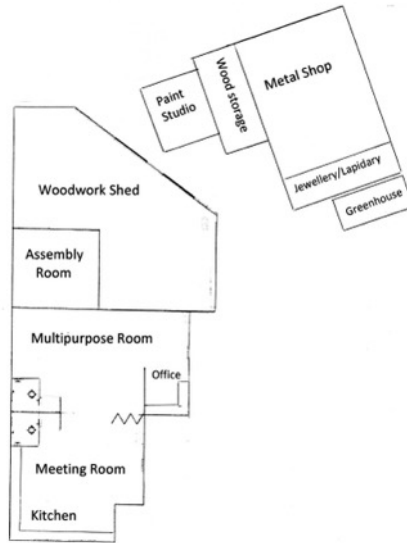


Meeting Room



Assembly Room

Multipurpose Room



Paint Studio (Reg's Cave)



Metal Shop



Greenhouse



Jewellery/Lapidary